

MONTHLY MEMBERSHIP PROGRESS REPORT

District 19 L

Results as of: 5/31/2024

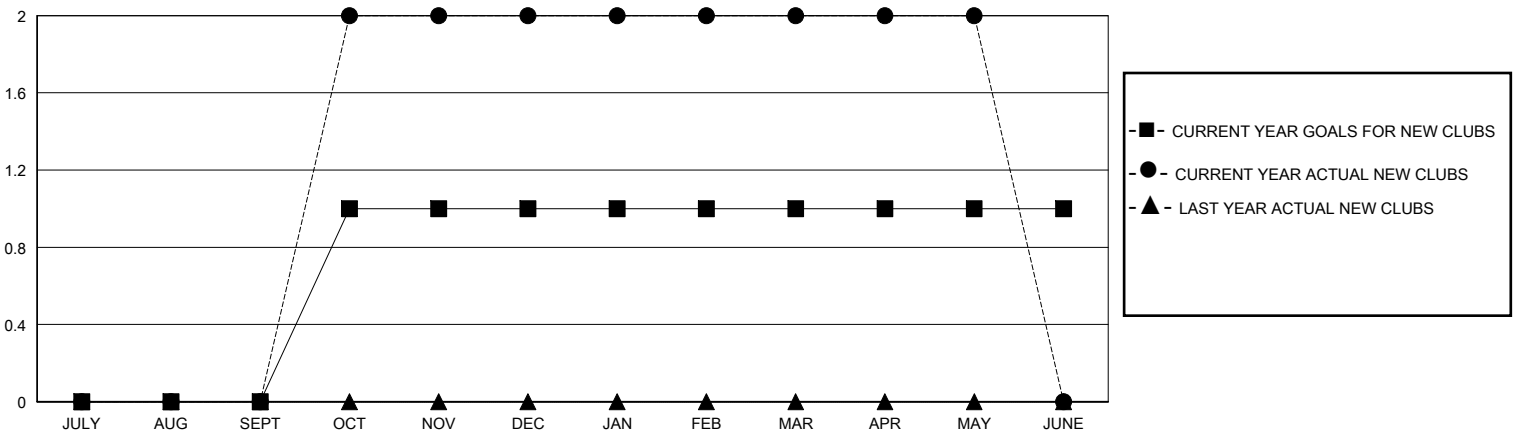
GMT:

LOCATION BRITISH COLUMBIA

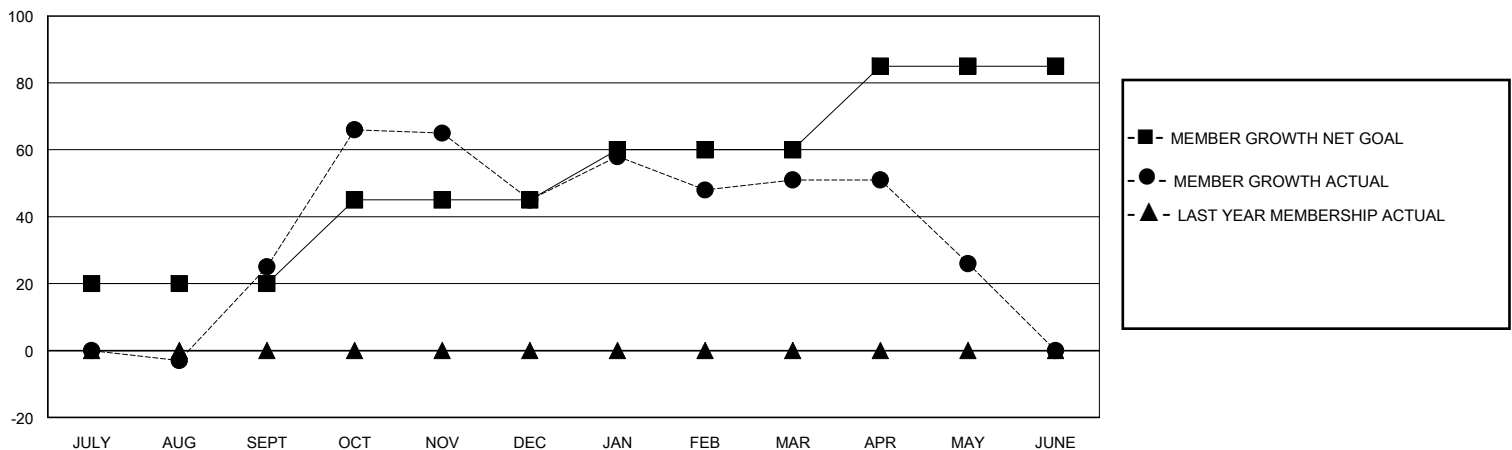
GMT CA

Clubs				Members			
RESULTS FOR 2023-2024				RESULTS FOR 2023-2024			
QUARTER	NEW CLUB GOAL	NEW CLUBS	DROPPED CLUBS	QUARTER	MEMBER GROWTH NET GOAL	MEMBER GROWTH ACTUAL	DROPPED MEMBERS ACTUAL (including transfers)
JULY/AUG/SEPT	0	0	0	JULY/AUG/SEPT	20	71	43
OCT/NOV/DEC	1	2	0	OCT/NOV/DEC	25	110	81
JAN/FEB/MAR	0	0	2	JAN/FEB/MAR	15	53	45
APR/MAY/JUNE	0	0	0	APR/MAY/JUNE	25	41	58

GOALS AND ACTUAL NEW CLUBS CUMULATIVE



GOALS AND ACTUAL MEMBERS CUMULATIVE



DROPPED CLUBS: 2

68 CLUBS OF 94 ADDED 1 OR MORE NEW MEMBERS

GENDER DISTRIBUTION

MALE 1,110 (53.01%)
FEMALE 982 (46.90%)

DROPPED MEMBERS

DECEASED	36
CLUB CANCELLED	0
OTHER	190
TOTAL	226

[CLICK HERE FOR CUMULATIVE MEMBERSHIP DATA](#)

TOTAL FAMILY UNIT MEMBERS	293
FAMILY MEMBERS PAYING HALF DUES	148